



MEMORANDUM

TO: Current and Potential Customers of the OJRSA
Board of Commissioners

FROM: Chris Eleazer, OJRSA Executive Director

DATE: May 29, 2025

SUBJECT: Changes to *OJRSA Schedule of Fees*

The following pages contain the draft *OJRSA Schedule of Fees* for Fiscal Year 2026. Fee changes and additions are indicated by yellow highlighted font and the old fees are listed by black highlighted text. If text was removed, then it is not included on this updated draft—refer to the FY 2025 *OJRSA Schedule of Fees*.

Examples:

New fee: \$1.00

Old fee: (old rate \$0.99)

New text: Definition



OJRSA
Oconee Joint Regional
SEWER AUTHORITY

SCHEDULE OF FEES

Effective July 1, 2025

CONTENTS

ADOPTION AND APPROVAL AS POLICY	1
ADOPTION	1
NON-SUBSTANTIVE CHANGES TO POLICY	1
DEFINITIONS, ACRONYMS, AND FORMAT	1
DEFINITIONS	1
ACRONYMS AND ABBREVIATIONS	3
DOCUMENT FORMAT	3
SERVICE AREA MAP	4
SECTION 1 RESIDENTIAL USER RATES	4
SECTION 2 NONRESIDENTIAL USER RATES	5
2.1 GENERAL NONRESIDENTIAL USER FEES	5
2.2 SPECIAL PRETREATMENT FEES	5
2.3 INDUSTRIAL AND OTHER NONRESIDENTIAL USER FEES	6
2.4 INDUSTRIAL PRETREATMENT BILLING EXPENSE BILLING	7
2.5 HAULED WASTE PROGRAM FEES	8
SECTION 3 IMPACT FEES	8
SECTION 4 ENGINEERING, CONNECTION, AND INSPECTION FEES	10
SECTION 5 CONTRACT SERVICES PROVIDED FOR NON-WHOLESALE OJRSA WASTEWATER SYSTEMS (INCLUDING RETAIL SEWER SYSTEM)	12
5.1 ROUTINE WORK	12
5.2 NONROUTINE WORK	12
SECTION 6 OTHER FEES AND FINES	13
6.1 FINANCIAL AND LATE FEES	13
6.2 FREEDOM OF INFORMATION ACT FEES	13
6.3 PENALTIES AND FINES	14
SECTION 7 APPEAL OF FEES	15
ENDNOTES (COMMENTS, EXAMPLES, AND FEE JUSTIFICATION)	15
REVISION HISTORY	18

Adoption and Approval as Policy

Adoption

The *OJRSA Schedule of Fees* (Policy) shall become effective on July 1, 2025 in accordance with *OJRSA Resolution 2025-05*.

These fees shall be in full force and effect from and after passage, approval, and publication, as provided by law.

Non-substantive Changes to Policy

Certain portions of this Policy, such as additions and/or corrections to internet addresses and links, illustrations, referenced forms, and as noted elsewhere within may be updated as necessary by the OJRSA Executive Director without being considered a substantive change to this Policy. Non-substantive changes shall not be documented in the Revision History table.

Definitions, Acronyms, and Format

This section of the *OJRSA Schedule of Fees* contains definitions, acronyms, abbreviations, and formatting that are specific to this document.

Definitions

Administrative Fee shall mean a fee that covers employee time spent on a task, time researching a project, meetings with consultants, preparing invoices or records, travel, basic postage and copies, etc. *Note: This fee is separate from the Administrative Pretreatment Fee.*

Administrative Pretreatment Fee shall mean a fee that covers general labor and incidental costs incurred by OJRSA, including those serving in agency's pretreatment program and other OJRSA staff as necessary, as well as general use materials used by the program (e.g., fuel for vehicles, general office supplies, electricity and other utilities for program, etc.). If specific industries require substantial time by other OJRSA staff, then the industries the work is performed for shall be billed for this time based on the median hourly wages of the lowest pay classification staff member(s) who have the necessary skills and training to perform the tasks along with all other costs associated with the task.

Board shall mean the OJRSA Board of Commissioners.

Calendar Day shall mean all days, including weekends and holidays.

Capacity Permit shall mean a Permit for OJRSA Wastewater System Capacity (or other document that serves this purpose) issued to a User or facility after January 1, 1990.

Commercial shall mean a company or organization occupied with or engaged in commerce or work intended for commerce. Examples include food service establishments, grocery stores, banks, hotels, office space, retail shops, multi-family developments, etc.

Customer shall mean a User who, according to the records of a Member City, Town of West Union, Oconee County, or the OJRSA, receives wastewater service at a site that is directly or indirectly served by the OJRSA via a sewer service connection.

Domestic Wastewater shall mean wastewater that originates from activities such as restroom usage, bathing, food preparation, laundry, etc.

Equivalent Residential Unit shall mean unit of measure used to express the amount of wastewater discharged by a typical fulltime single family residence. The OJRSA considers one ERU to equal the current gallons per day for residences (or single family residence or equivalent thereof) as listed in the current version of *South Carolina Regulation 61-67 Appendix A Unit Contributory Loadings to All Domestic Wastewater Treatment Facilities*.

Fiscal Year shall mean the accounting period for which the OJRSA operates, which is July 1 through June 30.

FOG Control Device shall mean FOG interceptors, FOG traps, or other OJRSA approved means of removing fats, oils, and grease from the wastewater conveyance and treatment system.

OJRSA Schedule of Fees

July 1, 2025

FOG Generator shall mean facilities that generate fats, oils, and grease.

Hauled Waste shall mean transported waste materials and products including, but not limited to waste from vessels, chemical and/or portable toilets, campers, trailers, septic tanks, FOG interceptors, FOG traps, and vacuum pump tank trucks.

Illegal Tap shall mean any tap or connection made on an OJRSA pipe, manhole, or other facility without written authorization from the OJRSA is considered an illegal tap. The property owner as identified by Oconee County tax records as of the date the connection was discovered is responsible for these costs. Deficiencies are defined as any methods and/or materials that are not approved by the OJRSA in its current version of the *OJRSA Sewer Use Regulation*, *OJRSA Development Policy*, or other OJRSA policy. Illegal connections are also subject to South Carolina Code of Law Title 6 Section 11-280 and others as appropriate.

Impact Fee shall mean the initial charge for the allocation of wastewater treatment and transportation capacity based upon the greater of the user's permitted or projected volume of wastewater discharge or contribution to the system. The collection and use of these fees are governed by the *OJRSA Impact Fee Policy*.

Industrial User (or Industrial) shall mean a user that introduces pollutants from any non-domestic wastewater source as regulated by the Federal Water Pollution Control Act (also known as the Clean Water Act), Title 40 of the Code of Federal Regulations, and/or applicable state/local laws and regulations.

Institution (or Institutional) shall mean an organization that provides services to the public or a specific sector of the public. Examples include schools, places of worship, medical facilities, prisons, etc.

Landfill Leachate shall mean a liquid that is formed when fluid from any source (e.g., rain, groundwater, wet paint, etc.) filters through wastes placed in a landfill. When this fluid comes in contact with buried wastes, it leaches, or draws out, chemicals or constituents from those wastes.

May is permissive. Shall is mandatory and requires compliance.

Master Meter shall mean a water meter that serves multiple tenants. This practice is often utilized in conjunction with multi-family developments (e.g., apartments, condominiums, etc.), subdivisions, and mobile home parks but can include other types of users.

Member Cities shall mean the cities of Seneca, Walhalla, and Westminster and others as defined by legally binding Intergovernmental Agreement(s).

Multi-Family Development shall mean a structure or complex of buildings intended for multiple families to reside in for extended periods of time. Examples include apartments, townhomes, condominiums, duplexes/multiplexes, etc. *Multi-family developments where each residential unit is served by its own water meter is considered a Residential User.*

Non-Domestic Wastewater shall mean wastewater from the production, manufacturing, or processing operations of certain Nonresidential Users, the discharge of which exceeds normal domestic wastewater maximum allowable concentration limits.

Nonresidential User (or Nonresidential) shall mean any use other than a Residential User, which may include, but is not limited to: Food Service Establishments, Industrial Users, health care facilities, religious establishments, educational facilities, assisted living facilities, office facilities, and other commercial establishments. *It shall also include apartments, condominiums, and other multi-unit housing complexes served by a Master Meter and/or with a common sewer service lateral or system serving multiple units prior to connecting with a public sewer.*

Nonroutine Work shall mean any work performed that is not defined as Routine Work, including work performed outside of normal business hours and emergency underground utility locates. *Complaint investigations are considered Nonroutine Work.*

Oconee County Sewer Commission shall mean an autonomous commission of Oconee County government and predecessor of the Oconee Joint Regional Sewer Authority.

Residential User (or Residential) shall mean an independent residential structure that sits on its own land and is intended to be used as a single unit with unshared utilities. Includes traditional detached homes, mobile homes, Multi-Family Developments (*if units have individual sewer plumbing that is not combined prior to connection to the public sewer system*), and recreational vehicle ("RV")/camper site with an individual water meter and sewer connection. It shall not include those served by a Master Meter or those defined as a Nonresidential User.

Retail Service Area shall mean the area where the OJRSA provides the following services for customers within this area: wastewater collection, trunk conveyance, and treatment. These services may be provided on systems which the OJRSA

OJRSA Schedule of Fees

July 1, 2025

owns or operates as a contractor for a separate owner. These areas are not owned, operated, nor maintained by a Member City. See Figure 1 (page 4) for more information.

Routine Work shall mean all work performed regularly, repeatedly, and according to a standard procedure. This work is (or can be) scheduled and is performed during normal business hours and includes, but is not limited to: general site inspections, preventative maintenance of equipment, maintenance or replenishment of chemical feed systems, grounds and rights-of-way cutting or herbicide application, nonemergency underground utility locates, nonemergency fueling of generators, and transporting trailers used for bar screen operations. Similar work that is performed outside of normal business hours, if necessary, shall be considered Nonroutine Work. Complaint investigations are considered Nonroutine Work.

Shall is mandatory and requires compliance. May is permissive.

South Carolina Department of Environmental Services (SCDES) shall mean the government agency, or its successor agency, responsible for protecting the State of South Carolina's air, land, and water resources as authorized under multiple state and federal laws. Prior to July 1, 2024, the agency responsible for these functions was the South Carolina Department of Health and Environmental Control.

Special Pretreatment Device shall mean equipment used to reduce, remove, or alter the nature of pollutants in wastewater prior to entering the Public Sewer (as defined in the *OJRSA Sewer Use Regulation*). Such devices include, but are not limited to: FOG Control Devices, Oil/Water Interceptors, Sand/Oil Interceptors, Hair Trap/Interceptors, Lint Interceptors, Plaster Interceptors, Pretreatment Systems, and others as necessary to protect the conveyance system, treatment facility, and/or to comply with NPDES permit requirements.

Surcharge shall mean a charge for sewer service and treatment service for wastes having characteristics different from sanitary wastes and for which additional charges must be assessed in order to compensate for additional expenses and impacts incurred.

User shall mean any person or entity who directly or indirectly discharges, causes, or permits the discharge of domestic or nondomestic wastewater to any wastewater conveyance system directly or indirectly connected to an OJRSA facility. Users consist of Residential and Nonresidential Users as defined herein. A User can have water and/or sewer service provided by a Member City, OJRSA, or can be a Well Customer.

Well Customer shall mean a Customer that utilizes sewer service that receives potable or non-potable water from any hole that is drilled, dug, or excavated. Such Customers shall be classified as Residential or Nonresidential Users.

Wholesale Service Area shall mean the area where the retail wastewater and drinking water services are owned, operated, and maintained by a Member City. The OJRSA provides trunk wastewater conveyance and treatment services only in this area. See Figure 1 (page 4) for more information.

Acronyms and Abbreviations

e.g.: Exempli Gratia, Latin for "for example"

ERU: Equivalent Residential Unit

FEMA: Federal Emergency Management Agency or any successor agency

FOG: Fats, Oils, and Grease

FOIA: Freedom of Information Act

FY: Fiscal Year

gal: Gallons (unit of volume)

GIS: Geographic Information System

gpd: Gallons per Day (unit of flow)

gpm: Gallons per Month (unit of volume)

GSA: United States General Services Administration or any successor agency

IU: Industrial User

lb: Pound (unit of mass)

mg/L: Milligrams per Liter (unit of concentration)

O&P: Operations & Planning

OCSC: Oconee Count Sewer Commission

OJRSA: Oconee Joint Regional Sewer Authority

POV: Privately Owned Vehicle

SCDES: South Carolina Department of Environmental Services (or successor agency)

SUR: OJRSA Sewer Use Regulation

TKN: Total Kjeldahl Nitrogen

Document Format

This document contains fonts and styles that have certain meaning, such as a reference to other sections or materials. Below is a list of the text formats used within and what they represent in the *OJRSA Schedule of Fees*.

BOLD CAPITAL LETTERS Important point of emphasis

Dashed Underline Name of a form to use for documenting a task referenced in the document

Italics Title of books, manuals, and other documents

OJRSA Schedule of Fees

July 1, 2025

MIX-SIZED CAPITAL LETTERS

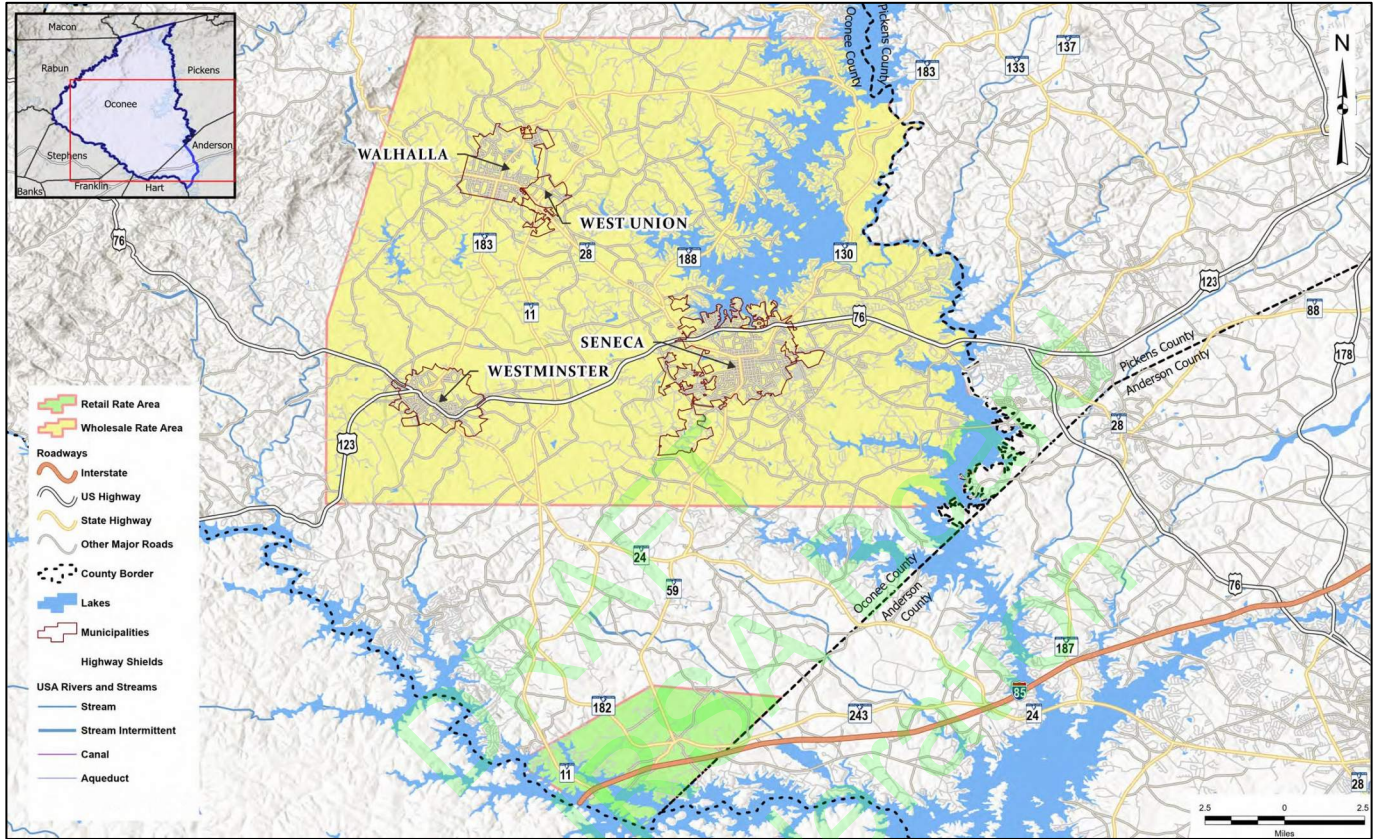
Underlined Italics

Name of sections or appendices in a book, manual, or other document

A note of caution or warning

Service Area Map

Figure 1: General map of the Wholesale and Retail service areas



Section 1 Residential User Rates

Residential Users are subject to fees as listed this section. See the map (Figure 1) on page 4 for more information regarding the Wholesale and Retail Service Areas. Fees for the Wholesale Service Area are based on the pro rata budgeted amount for FY 2023 that was converted to a base plus volumetric charge and approved by the Board on June 5, 2023 for FY 2024. The Retail Service Rates were recommended by Willdan Financial Services and approved by the Board on March 4, 2024.

Table 1: Residential User fees

Residential User monthly sewer fees	<p>WHOLESALE SERVICE AREA: Base rate of \$10.00 per month per water meter plus \$5.66 (old rate \$5.39) volumetric rate per 1,000 gallons used (rounded in accordance with water provider policy)</p> <p>RETAIL SERVICE AREA: Base rate in accordance with meter size as shown below:</p> <ul style="list-style-type: none">• 5/8-inch or 3/4-inch \$20.00 per month• 1-inch \$50.00 per month• 1.5-inch \$100.00 per month• 2-inch \$160.00 per month• 3-inch \$320.00 per month• 4-inch \$500.00 per month• 6-inch \$1,000.00 per month• 8-inch \$1,600.00 per month
-------------------------------------	---

OJRSA Schedule of Fees

July 1, 2025

	plus the per month Administration Fee imposed by the water provider plus \$6.70 (old rate \$6.38) volumetric rate per 1,000 gallons used (rounded in accordance with water provider policy)
Residential Well Customer monthly sewer fees (no retail sewer/water provider, no water or sewer meter)	<p>WHOLESALE SERVICE AREA: Base rate of \$10.00 per well per month plus flat volumetric rate of \$25.47¹ (old rate \$24.26) per well per month (Total of \$35.47 (old rate \$34.26) per month)</p> <p>RETAIL SERVICE AREA: Base rate of \$20.00 per well per month plus flat volumetric rate of \$30.15² (old rate \$28.71) plus the per month Administration Fee imposed by the water provider (Total of \$50.15 (old rate \$48.71) per month)</p>
Impact Fees	As detailed in SECTION 3

Section 2 Nonresidential User Rates

Nonresidential Users, which include Commercial, Industrial, Institutional, and Master Meter Multi-Family Developments, are subject to fees as listed this section. See map (Figure 1) on page 4 for more information regarding the Wholesale and Retail Service Areas. Fees for the Wholesale Service Area are based on the pro rata budgeted amount for FY 2023 that was converted to a base plus volumetric charge and approved by the Board on June 5, 2023 for FY 2024. The Retail Service Rates were recommended by Willdan Financial Services and approved by the Board on March 4, 2024.

2.1 General Nonresidential User Fees

Table 2: General Nonresidential User fees

Nonresidential User monthly sewer fees	<p>WHOLESALE SERVICE AREA: Base rate of \$15.00 per month per water meter plus \$7.74 (old rate \$7.37) volumetric rate per 1,000 gallons used (rounded in accordance with water provider policy)</p> <p>RETAIL SERVICE AREA: Base rate in accordance with meter size as shown below:</p> <ul style="list-style-type: none"> • 5/8-inch or 3/4-inch \$20.00 per month • 1-inch \$50.00 per month • 1.5-inch \$100.00 per month • 2-inch \$160.00 per month • 3-inch \$320.00 per month • 4-inch \$500.00 per month • 6-inch \$1,000.00 per month • 8-inch \$1,600.00 per month <p>plus the per month Administration Fee imposed by the water provider plus \$6.70 (old rate \$6.38) volumetric rate per 1,000 gallons used (rounded in accordance with water provider policy)</p>
Nonresidential Well Customer monthly sewer fees (No Retail Sewer/Water Provider, no water meter)	<p>WHOLESALE SERVICE AREA: Base rate of \$15.00 per well per month plus volumetric rate to be determined on a case-by-case basis, possibly by use of a sewer meter³</p> <p>RETAIL SERVICE AREA: To be determined on a case-by-case basis. All fees shall include an applicable base fee, volumetric fee (possibly determined by use of a sewer meter³), and per month Administration Fee imposed by the water provider.</p>
Impact Fees	As detailed in SECTION 3

2.2 Special Pretreatment Fees

Generators requiring Special Pretreatment Devices (as defined in the *OJRSA Sewer Use Regulation*) shall pay as listed in this section.

OJRSA Schedule of Fees

July 1, 2025

Table 3: Special pretreatment fees

Special Pretreatment Device User Permit Application review and processing	No fee
Special Pretreatment Device User Permit renewal	No fee
Routine and follow-up compliance inspections and administrative tasks	No fee
All laboratory analyses fees associated with a facility that is regulated by the OJRSA	Actual analysis costs incurred by OJRSA (including those if an outside laboratory is used) + 15% Administrative Fee (only if outside laboratory is used)
Special Pretreatment Device design and specifications review and approval fee for new, replacement, or modification	\$20.00 per device (one-time fee covers any future reviews necessary)
New, replacement, or modification inspection of a Special Pretreatment Device	Charged per hour with a one (1) hour minimum. Based on the hourly wage of the lowest pay classification of the Technical Services staff member(s) who has the necessary skills and training to perform the task. The rate used shall be the midpoint of the current FY pay range + benefits costs at 34% of wage + small SUV according to current FEMA Rate Schedule (or GSA mileage rate for POV , if applicable).
Variance inspections for a Special Pretreatment Device	Same as fee for Section 2.2 "New, replacement, or modification inspection of a Special Pretreatment Device"

2.3 Industrial and Other Nonresidential User Fees

Including other Nonresidential User fees, Industrial Users are subject to fees as listed this section. Fees based on April 18, 2025 recommendation from Goldie Associates (consultant) after evaluation of program and/or treatment costs at facility(ies).

Table 4: Other Industrial and Nonresidential User fees

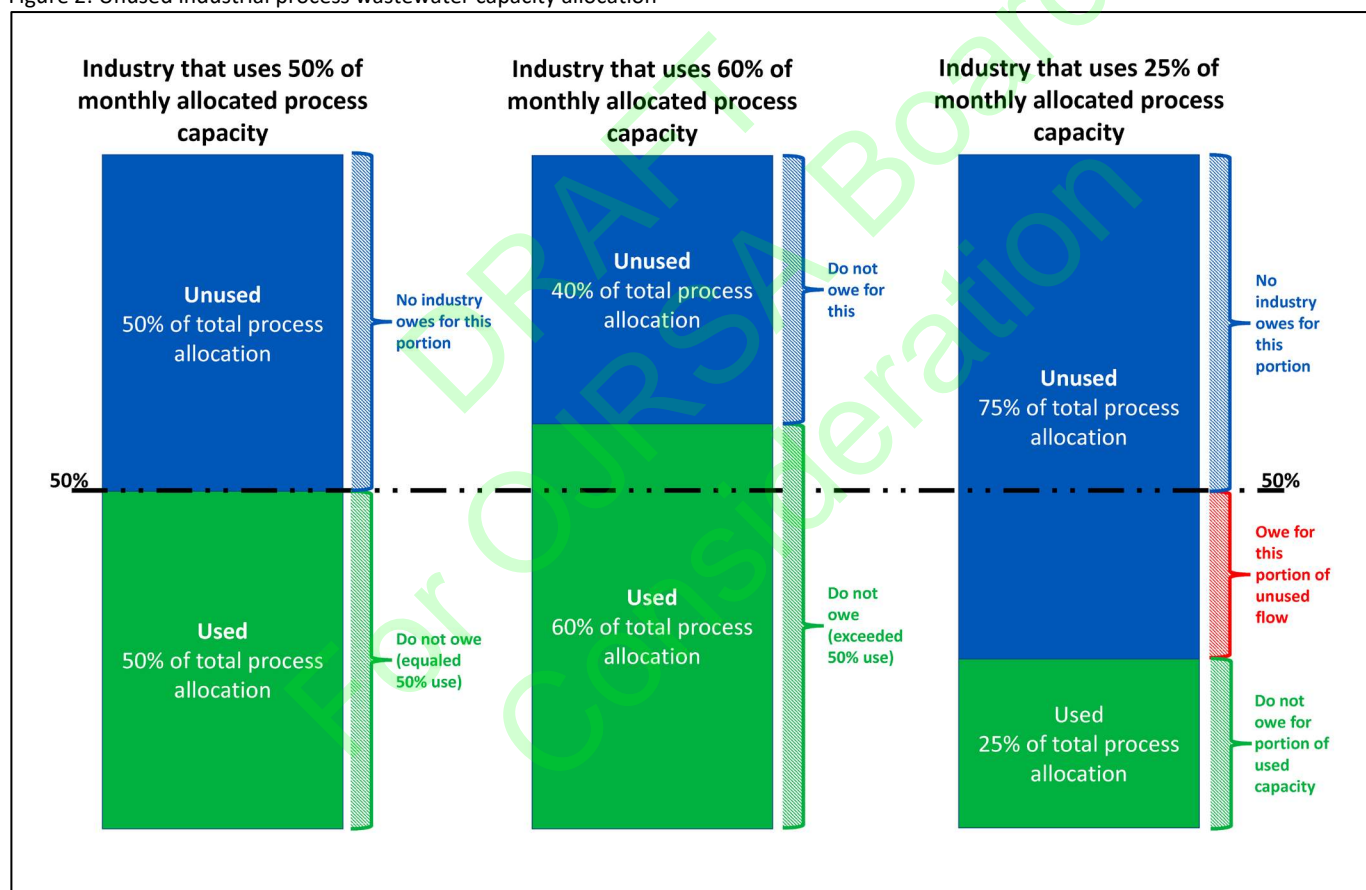
Industrial Pretreatment Permit Application Processing	No fee
Industrial Pretreatment Permit Renewal	No fee
Nonsignificant Source Wastewater Discharge Permit Application	No fee
Nonsignificant Source Wastewater Discharge Permit	No fee
Other permits not explicitly listed in this Schedule of Fees	No fee
Calculation of Surcharges	\$30.00 (old rate \$25.00) per quarter for periods when calculations are necessary
Biochemical Oxygen Demand (BOD) Surcharge	\$0.00 for concentration of 0-250 mg/L \$0.30 per pound above 250 mg/L ^{4,5}
Chemical Oxygen Demand (COD) Surcharge	\$0.00 for concentration of 0-750 mg/L \$0.30 per pound above 750 mg/L ^{4,5}
Phosphorus (P) Surcharge	\$0.00 for concentration of 0-7 mg/L \$0.40 (old rate \$0.35) per pound above 7 mg/L ⁴
Total Kjeldahl Nitrogen (TKN) ⁶ Surcharge	\$0.00 for concentration of 0-30 mg/L \$0.40 per pound above 30 mg/L ⁴
Total Suspended Solids (TSS) Surcharge	\$0.00 for concentration of 0-250 mg/L \$0.50 (old rate \$0.30) per pound above 250 mg/L ⁴
Flow (gpd) Surcharge	Same volumetric rate as stated in SECTION 2.1 Nonresidential User Monthly Fees Wholesale Service Area (old rate \$6.35) per 1,000 gallons above permitted limit (rounded up to the next 1,000 gallons)
Late Discharge Monitoring Report from low volume dischargers and Industrial Users	\$100.00 the first day late and \$50.00 per business day thereafter until report is received and Notice of Violation or other enforcement action as required by the <i>OJRSA Sewer Use Regulation</i> .

OJRSA Schedule of Fees

July 1, 2025

<p>Unused capacity fee for Industrial Users</p> <p><u>See illustration in Figure 2 for general information</u></p>	<ul style="list-style-type: none"> • Average monthly discharge of 50% or more ($\geq 50\%$) of their capacity as stated on the industry's current <i>Significant Industrial Wastewater Discharge Permit</i> as issued by OJRSA - \$0.00 per month when the facility's total flow discharged for the month is at least 50% of their total monthly allocated flow.^{7,8} • Average monthly discharge of less than 50% ($< 50\%$) of their capacity as stated on the industry's current <i>Significant Industrial Wastewater Discharge Permit</i> as issued by OJRSA. - \$2.00 per 1,000 gallons of not utilized by the industry between the industry's actual total monthly discharge and 50% of their permitted monthly discharge. [NOTE: The permitted industry is only paying for unused process wastewater capacity for the volume range of 0% to 50% of the amount as listed on their OJRSA-issued Significant Industrial Wastewater Discharge Permit.]^{7,8}
--	---

Figure 2: Unused industrial process wastewater capacity allocation



2.4 Industrial Pretreatment Billing Expense Billing

Industries subject to OJRSA industrial pretreatment requirements must pay program fees using the following methodology:

A. Quarterly billing:

1. Base fee: $1/x$ (where x is equal to the number of Industrial Users that have a *Significant Industrial Wastewater Discharge Permit* during that quarter) of the salary and benefits expensed for the designated Pretreatment Coordinator (and additional dedicated department staff, if applicable);
2. Items related to materials or services procured for the industry, such as: licenses/certifications/memberships; seminars/workshops/training; legal; public relations and advertising; mailing/shipping; office supplies; supplies/tools; technology (phones/internet/ television); professional and service contracts; and rolling stock and equipment;

OJRSA Schedule of Fees

July 1, 2025

3. Hours and benefits that other OJRSA employees spend working on items associated with the industry;
 4. Surcharge fees for flow and particular chemical exceedances as stated in SECTION 2.3 Table 4;
 5. Unused monthly capacity fees as stated in SECTION 2.3 Table 4; and
 6. Twenty percent (20%) administration fee on SECTION 2.4 Paragraphs A.1, A.2, and A.3 only.⁹
- B. A 10% late fee is added every 30 days the invoice has not been paid.
- C. Penalties and fines associated with enforcement action are to be paid invoiced at the time expense is incurred.

2.5 Hauled Waste Program Fees

Fees are supportive of the *OJRSA Sewer Use Regulation* and other requirements and are subject to the OJRSA's acceptance of any or all products as stated within the Regulation and/or availability to accept at the Water Reclamation Facility for treatment or disposal. Fees based on April 18, 2025 recommendation from Goldie Associates (consultant) after evaluation of program and/or treatment costs at facility(ies).

Table 5: Hauled waste program fees

Hauled Waste Disposal Permit	\$120.00 per year (prorated based on the permit effective date) ^{10,11}
Sanitary sewage from septic tank	\$200.00 per 1,000 gallons (rounded up to the next 1,000 gallons; if the OJRSA can meter the discharge, then the fee will be \$0.185 per gallon) ¹²
Hauled liquid treatment plant waste (e.g., sludge from package treatment plant)	\$200.00 per 1,000 gallons (rounded up to the next 1,000 gallons; if the OJRSA can meter the discharge, then the fee will be \$0.185 per gallon) ¹²
Portable toilet waste	\$75.00 per 1,000 gallons (rounded up to the next 1,000 gallons; if the OJRSA can meter the discharge, then the fee will be \$0.066 per gallon). ¹²
Hauled waste solids	<ul style="list-style-type: none"> Current tipping fee (in tons or pounds, rounded up to next ton or billable weight/volume as charged by the landfill or final disposal site) + current transportation costs (as charged by third-party waste hauler) + 25% Administrative Fee. <u>Since this fee can change with little to no notice by the landfill or hauler, it is suggested to call 864-972-3900 and request the current fee prior to delivery of hauled waste solids to OJRSA.</u> If solids can be weighed by certified scale either independently owned or owned by OJRSA, then OJRSA will bill based on partial weight of load using the same calculation as above but with actual weight instead of rounded.
Landfill leachate	Same volumetric rate as stated in SECTION 2.1 Nonresidential User monthly sewer fees (old rate \$6.35) per 1,000 gallons (rounded up to the next 1,000 gallons) + Calculation of Surcharge fee (as stated in SECTION 2.3 + Surcharge rates (as stated in SECTION 2.3)
Grease	Per <i>OJRSA Sewer Use Regulation</i> , the OJRSA no longer accepts grease as of October 1, 2023
Afterhours acceptance fee as stated in SECTION 10.2(A)(2) of the <i>OJRSA Sewer Use Regulation</i>	\$150.00 <u>per delivery</u> + other disposal costs based on product received as stated within SECTION 2.5 Table 5
Sampling and analysis of hauled waste	\$25.00 per analysis + applicable contract lab costs
Failure to clean OJRSA manual bar screen at hauled waste discharge locations	\$50.00 per delivery for first offense, \$100 for second offense, and \$500 for third and subsequent offenses ¹²

Section 3 Impact Fees

- A. Fees established in this Policy are based Weston & Sampson April 3, 2025 memorandum titled "Impact Fee Analysis – SCDES Contributory Loadings".
- B. This Policy applies when a developer requests water and/or sewer service with the retail utility provider. The OJRSA will

OJRSA Schedule of Fees

July 1, 2025

not approve the establishment of water or sewer service nor the issuance of a building permit until all fees are paid.

- C. Impact Fees are based on the *OJRSA Schedule of Fees* at the time an Application for Capacity in the OJRSA Sewer System form is completed by the owner/developer.
1. Impact Fees are in Table 6.
 2. If there is a Board-approved change to Impact Fees within twenty (20) calendar days of when OJRSA has notified the developer of their Impact Fees that are due and that submitted plans have already been approved by OJRSA, then the developer has ten (10) calendar days beyond the date the fees change (inclusive of the first day of the change) to pay the Impact Fees that were presented; otherwise the new Impact Fee rates shall apply.
- D. Impact Fees collected are held in a restricted fund and are to be used only for specific projects and purposes allowed by law and OJRSA policy. (See the *OJRSA Impact Fee Policy* and *OJRSA Financial and Accounting Policy*).
- E. Fees shall be based on SECTION 7 TABLE 24 of *OJRSA Development Policy* as approved by the OJRSA Board of Commissioners.
- F. Subdivisions
1. For Subdivisions Constructed Prior to July 1, 2021 – Homes constructed within these subdivisions will be responsible for paying a singular Impact Fee based on one residence or subdivision lot as stated in Table 6.
 2. For Subdivisions Planned or Constructed After July 1, 2021 – Prior to the OJRSA issuing a Willingness & Ability to Serve, Commitment to Own, Commitment to Own & Operate, or other such letter required by the South Carolina Department of Environmental Services (SCDES) that is necessary for the permitting of a wastewater collection system extension serving a development, the owner/developer shall pay Impact Fees for all lots within the subdivision. These fees shall be based on the number of lots multiplied by the fee for one residence or subdivision lot as stated in Table 6.
- G. Customers Using Unmetered Connections or Groundwater Wells
1. Unmetered Residential Connections – Residential Users directly or indirectly connected to a OJRSA wastewater conveyance system or treatment facility that use wells or other unmetered connections for their water supply shall be charged an Impact Fee for each well that is connected to the sewer system at the same rate as one residence or subdivision lot as listed in Table 6.
 2. Unmetered Nonresidential Customers – Nonresidential customers directly or indirectly connected to the OJRSA wastewater conveyance system or treatment facility that use wells or other unmetered connections for their water supply shall be charged an Impact Fee for each well that is connected to the sewer system. An engineer of the OJRSA's choosing will determine the appropriate Impact Fee for each customer. Such fees made by the OJRSA's consultant shall not establish precedence for similar circumstances that may occur in the future.
- H. Circumstances Not Addressed in this Policy – Unusual situations and conditions not addressed in this Policy will be considered in consultation with the OJRSA's engineer on a case-by-case basis. Such decisions made by the OJRSA shall not establish precedence for similar circumstances that may occur in the future.

Table 6: Impact fees

Type of Use	FY 2026	FY 2027	FY 2028
Impact Fee for one residence or subdivision lot as per Item CC in SECTION 7 TABLE 24 of <i>OJRSA Development Policy</i> , <u>which shall be referred to as one Equivalent Residential Unit (ERU). This includes residences or subdivision lots that are connected to sewer but are served by a well for water.</u>	\$4,100 for one ERU	\$5,005 for one ERU	\$7,720 for one ERU
Impact Fee for other uses as listed in SECTION 7 TABLE 24 of <i>OJRSA Development Policy</i>	\$13.66/gallon	\$19.70/gallon	\$25.73/gallon
Process wastewater as listed on Industrial User Permit issued by OJRSA <u>(per acquisition of new or additional capacity, not per renewal of IU Permit)</u>	\$13.66/gallon	\$19.70/gallon	\$25.73/gallon
Other circumstances not addressed in this Policy or as defined in the <i>OJRSA Impact Fee Policy</i>	\$13.66/gallon	\$19.70/gallon	\$25.73/gallon

(old rates below)

Use	Water Meter Size (inch)	ADU (gpd)	Fee Per Water Meter
Residential User	3/4 or 5/8	150	\$2,300
	1	365	\$5,600
Nonresidential User	3/4 or 5/8	225	\$3,400
	1	625	\$9,500

OJRSA Schedule of Fees

July 1, 2025

	1.5	1,630	\$24,900
	2	3,305	\$50,400
	3	9,815	\$149,700
	4	12,340	\$188,200
	6	23,630	\$360,400
	8	37,100	\$565,800

Section 4 Engineering, Connection, and Inspection Fees

The OJRSA shall charge the fees as listed in Table 7 for engineering, plan reviews, inspection, taps/connections, and other such services. Fees based on May 22, 2025 recommendation from Weston & Sampson (consultant) after evaluation of program costs and OJRSA determination of inspection and service fees.

Table 7: Engineering and inspection fees

Hydraulic modeling analysis for downstream impact caused by potential or proposed new or upsized development that will increase flow by at least 10,000 gpd or for areas of concern within the sewer system as identified in the current version of the OJRSA hydraulic model or known of areas of concerns. <i>This is to be based on This is to be based on SCDES Regulation 61-67 Appendix A Unit Contributory Loadings to All Domestic Wastewater Treatment Facilities.</i>	Actual consultant's fee + 25% Administrative Fee. This fee will be updated on the <u>Downstream Wastewater Modeling Analysis Request</u> form as stated at www.ojrsa.org .
Other developer costs not covered elsewhere in the <i>OJRSA Schedule of Fees</i> (includes studies or additional work performed by OJRSA and/or its consultants for a project)	<p>For each task required, the developer shall compensate the OJRSA for the following:</p> <ul style="list-style-type: none"> • IF WORK PERFORMED SOLELY BY OJRSA STAFF: The rate used shall be the midpoint of the current year FY pay range for all staff positions involved + benefits costs at 34% of wages + equipment costs according to current FEMA Rate Schedule, GSA mileage rate for POV, and/or equipment/material purchase and/or rental fees as applicable. • IF WORK TO BE PERFORMED SOLELY BY A CONSULTANT: The fee shall be the actual consultant's fee + 25% Administration Fee. • IF WORK IS TO BE A COMBINATION OF OJRSA STAFF AND A CONSULTANT: The fee shall be based on the actual consultant's fee + the midpoint of the current year FY pay range for all staff positions involved + benefits costs at 34% of wages + costs of equipment used according to current FEMA Rate Schedule, GSA mileage rate for POV, and/or equipment/material purchase and/or rental fees as applicable.

OJRSA Schedule of Fees

July 1, 2025

Plans and specifications review¹³ (unless otherwise noted, these fees are for each review, including resubmittals)

Single Family Homes

- On individual lot not located in a subdivision (unless there is a grinder pump, then only the grinder pump fee listed below is applicable) – \$0.00^{14,15,16}
- To be located in a subdivision/planned development that requires gravity sewer and/or force mains installation – \$0.07 (old rate \$0.05) per linear foot of pipe
- Pump station addition to serve development – \$300.00 per station (one review fee covers initial review of each plus resubmittals)
- Grinder pumps for individual units – \$2.00 (old rate \$1.00) per pump

Multi-Family Development

- No amenities (pool, clubhouse, etc.) – \$1.85 per residential living unit
- If includes amenities – \$3.10 per residential living unit
- Gravity sewer and/or force main extension – \$0.07 (old rate \$0.05) per linear foot of pipe
- Pump station addition to serve development – \$300.00 per station (one review fee covers initial review of each plus resubmittals)
- Grinder pumps for individual units – \$2.00 per pump
- Buildings other than residential living units and those that provide amenities (pool, clubhouse, etc.) shall be calculated as a Commercial, Industrial, and/or Institutional Facility as stated below.

Commercial, Industrial, and/or Institutional Facility

- Building space – \$0.04 per square foot of building space served by water and/or sewer
- Gravity sewer and/or force main extension – \$0.07 per linear foot of pipe
- Pump station addition to serve development – \$300.00 per station (one review fee covers initial review of each plus resubmittals)
- Grinder pumps for individual units – \$2.00 per pump

Special Pretreatment Devices

- See Section 2.2

General inspection fees (for inspections other than new, replacement, or modification inspection of a Special Pretreatment Device)

Charged per hour with a two (2) hour minimum. Based on the hourly wage of the lowest pay classification of the staff member(s) who has the necessary skills and training to perform the task. The rate used shall be the midpoint of the current year FY pay range + benefits costs at 34% of wage + ½-ton truck according to current [FEMA Rate Schedule](#) (or [GSA mileage rate for POV](#), if applicable).

For inspection fees associated with Special Pretreatment Devices, see Section 2.2.

OJRSA Schedule of Fees

July 1, 2025

<p>GIS and system mapping fees¹⁷ <i>This is applicable to developments installing infrastructure that requires a SCDES Construction Permit (or equivalent) and/or for onsite privately-owned wastewater infrastructure that is greater than or equal to 8-inches in diameter and/or has a privately-owned pump station and force main.</i></p> <p>This fee applies to any portion of the system served directly or indirectly by OJRSA.</p>	<p>\$250.00 Base Fee for up to 1,000 linear feet of gravity sewer and/or force main pipe + \$0.25 per additional linear foot of pipe. There is not a fee associated with pump station construction.¹⁸</p> <p><i>Note: The minimum fee due is the Base Fee.</i></p>
Tap and tap maintenance fees	<ul style="list-style-type: none"> In addition to Impact Fees, all new connections that physically connect directly with the OJRSA wastewater conveyance system must pay the costs to install each tap plus 30% to fund future maintenance of connection. Actual costs are for labor, equipment, and materials and may be performed by either OJRSA or a contractor for OJRSA. If a contractor makes connection (or installs manhole with precast service connection(s)) and they are paid directly by the developer, then the developer shall be required to pay \$200 per diameter inch of the connection to OJRSA's system for future maintenance. The contractor will not have to pay a construction tap fee to the OJRSA as the OJRSA did not incur any costs.¹⁹
Disconnection from sewer system	\$400.00
Reconnection to sewer system	\$400.00

Section 5 Contract Services Provided for Non-Wholesale OJRSA Wastewater Systems (including Retail Sewer System)

The OJRSA shall charge the fees as stated in this section for Routine and Nonroutine Work performed for other utility owners on a contractual basis.

5.1 Routine Work

Table 8: Routine Work fees

Routine Work (as stated in the DEFINITIONS section)	\$6,500 per calendar quarter
---	------------------------------

5.2 Nonroutine Work

Nonroutine Work shall be billed in accordance with the fees listed in Table 9.

Table 9: Nonroutine Work fees

OJRSA Personnel	<p><u>Exempt Staff</u></p> <ul style="list-style-type: none"> Work performed during normal business hours (charged in 1/10 hour increments) – Midpoint of hourly wage of position classification(s) performing task x hours worked in 1/10 hour increment + benefits costs at 34% of wage²⁰ Work performed during non-business hours – (Midpoint of hourly wage of position classification(s) performing task x hours worked in 1/10 hour increment) x 1.5 (to convert wage to overtime pay) + benefits costs at 34% of wage²⁰ <p><u>Non-Exempt Staff</u></p> <ul style="list-style-type: none"> Work performed during normal business hours – Midpoint of hourly wage of position classification(s) performing task x
-----------------	---

OJRSA Schedule of Fees

July 1, 2025

	<p>hours worked in 1/10 hour increment + benefits costs at 34% of wage²⁰</p> <ul style="list-style-type: none"> • Work performed during non-business hours – Midpoint of hourly wage of position classification(s) performing task x hours worked in 1/10 hour increment + benefits costs at 34% of wage²⁰ <p><u>Other Items</u></p> <ul style="list-style-type: none"> • General accounting – Midpoint of hourly wage of position tasked with accounts payable/receivable x 0.4 hours + benefits costs at 34% of wage²⁰ • Industrial pretreatment program – Midpoint of hourly wage of position tasked with pretreatment program oversight x hours worked in 1/4 hour increment + benefits costs at 34% of wage²⁰ • Engineering – Midpoint of hourly wage of position tasked with engineering or program management x hours worked in 1/4 hour increment + benefits costs at 34% of wage²⁰
Vehicles and Equipment	<ul style="list-style-type: none"> • Transportation of staff only (no work to be performed that requires tools other than those necessary for SC811 locates) – GSA mileage rate for POV x total mileage driven + 25% Administrative Fee • Vehicles used for performing work (other than SC811 locates) – FEMA Rate Schedule x total hours used (or miles mileage driven, if applicable) + 25% Administrative Fee • OJRSA vehicles or equipment not listed in FEMA Rate Schedule – Cost to rent comparable vehicle or unit of equipment + 25% Administrative Fee • Rental vehicles or equipment – Actual rental cost + 25% Administrative Fee
Materials and services (including use of non-OJRSA personnel)	<ul style="list-style-type: none"> • Materials – Actual unit cost + 25% Administrative Fee • Services provided by others – Actual cost of services + 25% Administrative Fee • Utilities paid by OJRSA – Actual cost + 25% Administrative Fee

Section 6 Other Fees and Fines

6.1 Financial and Late Fees

Table 10: Financial and late fees

Credit or debit card processing	Customer to pay actual transaction fee charged by processing company
Late payments	All payments not received within 30 days of the issuance of the invoice will be charged a 10% late fee for every 30 days the payment is outstanding
Returned check (NSF) fee	\$30.00 per returned check

6.2 Freedom of Information Act Fees

Table 11: FOIA fees

Minutes of the meetings of the public body for the preceding six (6) months	No fee per SC Law §30-4-30(D)
---	-------------------------------

OJRSA Schedule of Fees

July 1, 2025

Documents produced by the public body or its agent that were distributed to or reviewed by a member of the public body during a public meeting for the preceding six (6) months	No fee per SC Law §30-4-30(D)
Cumulative research and retrieval time if less than 10 minutes <u>and</u> the total number of documents requested by the FOIA requestor is 10 pages or less	No fee
Documents are in electronic format at the time a request is received	No fee for electronic files per SC Law §30-40-30(B); however, applicable research fees shall still apply. Documents will be provided for distribution once any necessary research fees have been paid.
Scanning documents to electronic format	Actual costs + contract services costs, if applicable. Fifteen percent (15%) Administrative Fee will be added to contract services costs.
Staff research, search, retrieval, redaction, and copying	Prorating of fees shall be based on increments of one-tenth (1/10) of an hour and will not exceed the prorated hourly wage of lowest pay classification of the staff member(s) who has the necessary skills and training to fulfill the request.
Distribution of records methods	<ul style="list-style-type: none"> • Pick-up at OJRSA Administrative Complex – No fee²¹ • U.S. First Class Mail – Actual cost of postage²¹ • Filesharing website or email – No fee²¹ • Flash drive – Actual cost of flash drive^{21,22}
Copies	<p><u>Black & white</u></p> <ul style="list-style-type: none"> • 8.5 x 11 and 8.5 x 14 – Other applicable fees + \$0.10 per page • 11 x 17 – Other applicable fees + \$0.25 per page • Larger than 11 x 17 – Other applicable fees + \$0.50 per square foot or contract service costs + 15% Administrative Fee <p><u>Color</u></p> <ul style="list-style-type: none"> • 8.5 x 11 and 8.5 x 14 – Other applicable fees + \$0.15 per page • 11 x 17 – Other applicable fees + \$0.50 per page • Larger than 11 x 17 – Other applicable fees + \$0.50 per square foot or contract service costs + 15% Administrative Fee
Other reproduction services	Other applicable fees + actual costs + 15% Administrative Fee

6.3 Penalties and Fines

Table 12: Penalties and fines

Illegal Taps or other illegal connections	\$2,000.00 penalty + Applicable Impact Fee(s) + Tap Fee(s) + Cost of Repairs and/or Cleaning to System + General Inspection Fees + Applicable Legal Fees
Users who violate the provisions of the <i>OJRSA Sewer Use Regulation</i> or fail to abide by any rules, requirements, or procedures that OJRSA implements in support of the Regulation	As stated in SECTION 8 of the <i>OJRSA Sewer Use Regulation</i>

END OF FEES

Section 7 Appeal of Fees

- A. Items as stated within the *OJRSA Schedule of Fees* can be appealed to the OJRSA Board of Commissioners via the agency's standing Operations & Planning (O&P) Committee by requesting that OJRSA Administration add the matter to an O&P Committee meeting agenda. Dates of the meetings can be found on the OJRSA website (www.ojrsa.org) but it is recommended that the requestor filing for appeal contact the OJRSA office by phone at 864-972-3900 to confirm meeting dates and times. Requestors asking for a variance of this Policy shall attend all meetings to present their case for appeal and address questions and concerns from OJRSA Commissioners and staff; however, attending the meetings is not a substitute for submitting a written appeal as stated above.
- B. Requests for appeals must be received no less than five (5) business days prior to the upcoming meeting and must be in writing to:
- Oconee Joint Regional Sewer Authority
ATTN: Executive Director
623 Return Church Road
Seneca, South Carolina 29678
info@ojrsa.org
- C. If the request for variance is approved by the O&P Committee, then it will proceed to the OJRSA Board of Commissioners at the next scheduled meeting for consideration. The decision made by the Board of Commissioners shall be final.

Endnotes (Comments, Examples, and Fee Justification)

- ¹ Wholesale Residential Well Customer rate is based on estimated wastewater discharge of 150 gallons per day x 30 days per month = 4,500 gallons per month ÷ 1,000 = 4.5 thousand gallons per month x \$5.66 per 1,000 gallons per month = \$25.47.
- ² Retail Residential Well Customer rate is based on estimated wastewater discharge of 150 gallons per day x 30 days per month = 4,500 gallons per month ÷ 1,000 = 4.5 thousand gallons per month x \$6.70 per 1,000 gallons per month = \$30.15.
- ³ To be determined by a special meter to measure water discharged to sewer ("sewer meter") or other means as recommended by a qualified engineering and/or consultant and approved by OJRSA Administration.
- ⁴ The formula for calculating surcharges is: (Monthly Concentration Average for Monitoring Parameter minus Surcharge Concentration Threshold for Same Parameter) x 8.34 conversion factor x (Total Flow for the Month in Gallons ÷ 1,000,000 Gallons) x Surcharge Rate = Surcharge Amount Due in Dollars NOTE: If an industry samples less frequently than monthly (i.e., quarterly), then the monthly average calculation will continue each month until the next month the parameter is sampled.
- The following calculation uses fictitious fees for demonstration purposes only (This example uses fees for BOD; however, the same formula applies for all monitored parameters. Fee calculations shall use those listed in the current OJRSA Schedule of Fees) – An industry has a monthly BOD average concentration of 500 mg/L. The total flow for the month is 310,000 gallons and the threshold limit for BOD is 250 mg/L. The BOD surcharge rate is \$0.30/lb of BOD.
- Step 1: (500 mg/L - 250 mg/L) x 8.34 x (310,000 gal/month ÷ 1,000,000 gal) x \$0.30/lb of BOD = BOD Surcharge Fee
- Step 2: 250 mg/L x 8.34 x 0.310 million gal/month x \$0.30/lb of BOD = BOD Surcharge Fee
- BOD Surcharge Fee Due = \$193.91
- ⁵ An industry will not be charged both BOD and COD, the surcharge will be calculated for both BOD and COD and the industry will be charged the higher rate.
- ⁶ The sum of organic nitrogen, ammonia (NH₃), and ammonium (NH₄⁺) in wastewater. TKN does not include Nitrate (NO₃⁻) and Nitrite (NO₂⁻).
- ⁷ Total Industrial User capacity per month is equal to the facility's Permitted Allocated Capacity per day multiplied by the number of days for each month individually (e.g., 31 days for January, 28 days for February, etc.).
- The following calculation uses fictitious fees for demonstration purposes only (Fee calculations shall use those listed in the current OJRSA Schedule of Fees) – An industry is permitted for a maximum allocation of 20,000 gpd of process wastewater discharge. In January (31 days in the month), they discharge a total of 176,700 gallons. The Unused Capacity threshold is 50% (meaning if they do not average greater than or equal to 50% of their allocated maximum discharge as stated on the permit, then they are subject to paying an unused capacity fee for that month for the unused volume between their actual monthly discharge and 50% of their permitted volume). The rate is \$1.50/1,000 gallons, which is prorated (not rounded to nearest 1,000 gallons).
- Step 1: Determine if the industry is subject to an unused process wastewater allocation capacity fee. Is the facility's monthly discharge at least 50% of their allocation of 20,000 gpd?
- 20,000 gpd x 31 days = 620,000 gal per month of maximum permitted discharge

OJRSA Schedule of Fees

July 1, 2025

176,700 gal actually discharged in January ÷ 620,000 gal max allowed x 100 = 28.5% usage of capacity
This facility DID NOT meet or exceed 50% of their discharge, so they will owe an unused capacity fee. (They would have needed to discharge at least 310,000 gallons in January to reach the 50% threshold.)

Step 2: Determine the amount of fee owed.

((Total Capacity Per Month x Allowed Percentage) – Total Monthly Discharge) ÷ 1,000 gal x \$1.50/1,000 gal =
Fee Owed for Month

((620,000 gpM x 50%) – 176,700 gpM) ÷ 1,000 gal x \$1.50/1,000 gal = \$199.95 owed for January

⁸ Unused Industrial User capacity fees are collected for the purpose of treatment and conveyance system expansion and are held in the restricted Impact Fee Fund in accordance with the *OJRSA Impact Fee Policy* and *OJRSA Financial and Accounting Policy* for the Wholesale or Retail Service Area, as appropriate, to be used in accordance with the *OJRSA Impact Fee Policy*.

⁹ Industrial pretreatment expense billing Administrative Fee covers incidentals and general labor spent by other OJRSA staff that are involved in the pretreatment program as necessary, as well as general use materials used by the program collectively (e.g., fuel used for vehicle, general office supplies, electricity and other utilities for program, etc.). If specific industries require substantial time by other OJRSA staff, then the industries that the work is performed for shall be billed for this time based on the hourly wages of the lowest pay classification staff member(s) who have the necessary skills and training to perform the tasks.

¹⁰ Hauled Waste Disposal Permit fee is based on the calendar year (January through December), not the Fiscal Year. If waste hauler is issued a Hauled Waste Disposal Permit (HWDP), then they must pay for the entire month the HWDP is applied for. Providing the waste hauler is in good standing with the OJRSA, the HWDP will remain valid through December 31 of that year. Amount owed if HWDP is obtained anytime during that month (e.g., if they apply for the HWDP on May 31, they must pay the amount for May as shown in the list within this footnote):

January = \$120.00	May = \$80.00	September = \$40.00
February = \$110.00	June = \$70.00	October = \$30.00
March = \$100.00	July = \$60.00	November = \$20.00
April \$90.00	August = \$50.00	December = \$10.00

¹¹ There are no refunds issued on Hauled Waste Disposal Permits.

¹² Waste hauler also subject to other enforcement actions as stated in the *OJRSA Sewer Use Regulation* and other applicable regulations and policies.

¹³ Plan reviews based on average time and labor costs for an OJRSA staff member and/or third-party consultant employed by OJRSA to perform such functions.

¹⁴ For each review, including resubmittals. If the owner/developer changes the plans after the initial review or corrections must be made per the *OJRSA Sewer Use Regulation*, *OJRSA Development Policy*, other OJRSA policy, or requirements imposed by a Member City or other governmental agency, the fee must be paid for each review thereafter.

¹⁵ There are no fees for projects that are designed and installed by a Member City when they are paying for the installation themselves, such as if a city is installing a main line extension entirely at their own expense and is not funded by a developer or other party. In most cases, the projects that meet this exemption are when a Member City is installing infrastructure to replace or rehabilitate existing facilities or when they are extending their own system at their own expense (and not as a pay-in-advance or reimbursement project by third-party(ies)). Appeals can be made by the Member City to the OJRSA Board of Commissioners in accordance with the process stated within SECTION 7 of the *OJRSA Schedule of Fees* to determine if this fee should be waived for other projects.

¹⁶ Or in a subdivision that received a Permit for OJRSA Wastewater System Capacity (or equivalent) prior to January 1, 2020. These were considered at the time the original subdivision plans were reviewed.

¹⁷ This fee is used for the OJRSA to incorporate data from the record drawings and other supporting documents (e.g., GPS devices, surveys, etc.) into its Geographic Information System map, which is used for hydraulic modeling, manage and track work orders, asset management, planning, etc.

¹⁸ The following calculation uses fictitious fees for demonstration purposes only (Fee calculations shall use those listed in the current OJRSA Schedule of Fees) – A project has been designed that has a 900 linear feet of gravity sewer pipe, 400 feet of force main pipe, and one (1) pump station. The Base Fee for the first 1,000 linear feet of total pipe is \$200.00 and the fee per additional linear foot of pipe is \$0.25/foot. There is no cost for the pump station.

Step 1: 900 feet of gravity + 400 feet of force main = 1,300 total linear feet of pipe for project

Step 2: 1,300 total linear feet – 1,000 linear feet for base rate = 300 linear feet above the base

Step 3: \$200.00 Base Fee + (300 linear feet x \$0.25/foot) + (1 pump station x \$0.00) = GIS fee due

Step 4: \$200 + \$75 + \$0 = GIS fee due

GIS Fee Due = \$275.00

¹⁹ Fee to pay for future maintenance of connection. The following calculation uses fictitious fees for demonstration purposes only (Fee calculations shall use those listed in the current OJRSA Schedule of Fees) – A contractor will bore into an existing

OJRSA Schedule of Fees

July 1, 2025

OJRSA manhole to make one (1) 4-inch pipe diameter service connection. The Tap Maintenance Fee Due at the time is \$200/inch diameter. (*OR* contractor shall set a doghouse manhole on existing OJRSA pipeline with one (1) 4-inch pipe diameter service connection.)

Step 1: \$200/inch diameter x 4-inch pipe diameter = Tap Maintenance Fee Due

Step 2: \$800 = Tap Maintenance Fee Due

²⁰ "Benefits fee" is a general term that covers employer costs for South Carolina Retirement System expenses, Social Security, Medicare, insurance, etc.

²¹ All copying, staff time, and other applicable fees must be paid prior to distribution of requested materials.

²² Device must be provided by the OJRSA to avoid risk of potential viruses that may be on flash drives belonging to the requester.

DRAFT
For OJRSA Board
Consideration

OJRSA Schedule of Fees

July 1, 2025

Revision History

As this document is an extension of the *OJRSA Sewer Use Regulation*, previous editions must be maintained in accordance with the *OJRSA Records Retention Policy*.

Revision Number	Effective Date	Description of Changes
0000	02/18/1980	Initial sewer user fees developed and approved by OCSC Board.
0001	08/04/1980	Hauled waste disposal fee modified.
0002	06/19/1984	Sewer use fees increased.
0003	01/01/1985	Revised sewer treatment fees developed and approved by OCSC Board via resolution approved on 01/07/1985.
0004	07/01/1985	Resolution approved on 01/07/1985 expired and rate structure changed.
0005	08/28/1989	Approved annual industry permitting fee on 08/28/1989.
0006	01/01/1990	Oconee County Ordinance [19]89-6 established Impact Fee for treatment capacity for future renovation, modernization, and expansion. OCSC approved on 08/28/1989.
0007	09/10/1990	Approved 2% late fee.
0008	10/07/1996	Approved increase of septic tank waste disposal and treatment fees.
0009	04/07/1997	Approved industrial surcharge fees.
0010	06/05/2000	Hauled waste fee increase approved.
0011	07/03/2006	Approved increase to Impact Fees and established a tap fee.
0012	04/01/2008	Approved addition of a "Transportation and Trunk Line Impact Fee."
0013	05/05/2008	Hauled waste fees increase based on percent increase on Member City fees.
0014	02/02/2009	Approved 20% Administrative Fee for permitted Industrial Users.
0015	10/03/2011	<i>OJRSA Schedule of Fees</i> updated.
0016	10/05/2015	Impact Fee calculation method changed.
0017	12/04/2017	Added fee for acceptance of portable toilet waste.
0018	11/06/2018	Inclusion of additional fees for credit card transactions, returned check, fats oils and grease program, engineering services, and FOIA. Approved by OJRSA Board on 11/05/2018.
0019	02/04/2019	Approved industrial facility flow surcharge and revised biosolids disposal fees.
0020	04/09/2021	Revised hauled waste program fees per <i>OJRSA Resolution 2021-11 Hauled Waste Policy Update</i> .
0021	07/01/2021	Revised Impact Fees per <i>OJRSA Resolution 2021-12 Impact Fee Policy Update</i> .
0022	10/01/2021	Approved comprehensive fee update on 09/13/2021.
0023	07/01/2022	Established unused capacity fee for Industrial Users. Includes other minor modifications.
0024	07/01/2023	Eliminated pro rata share model for user fees and established base plus volumetric model for Residential and Nonresidential Users.
0025	01/01/2024	Revised Impact Fees per <i>OJRSA Resolution 2024-04</i> .
0026	03/04/2024	Board approved newly established Retail Service Area rates.
0027	05/06/2024	Board approved updated fees per <i>OJRSA Resolution 2024-10</i> .
0028	06/02/2025	Board approved updated fees per <i>OJRSA Resolution 2025-05</i> .

END OF REVISIONS